

the “swiftenv”

5/26 '16

Swift 3.0 and the “swiftenv”

- Swift 3.0 will be released in late 2016. It's not source-compatible with Swift 2.2.

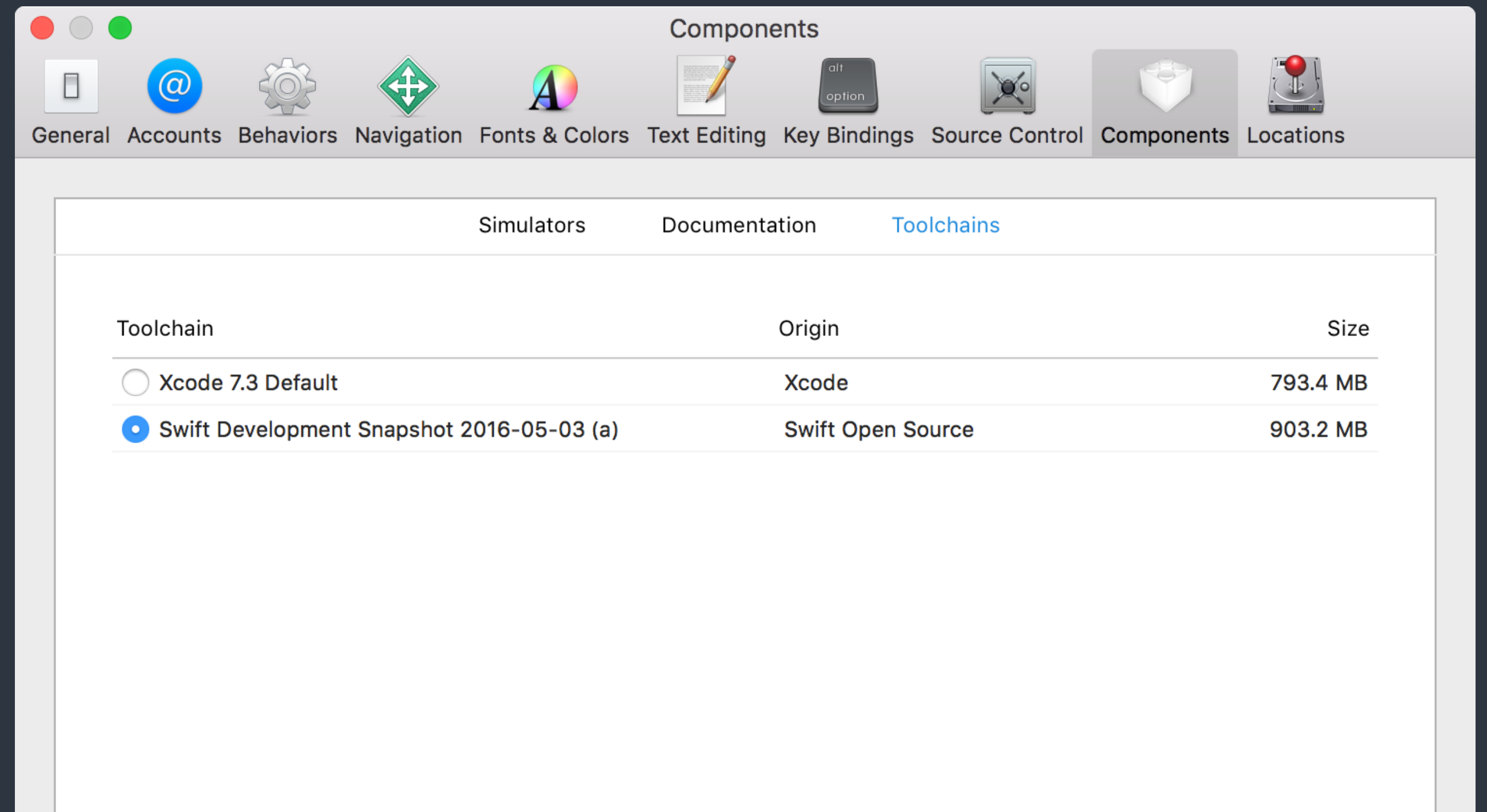
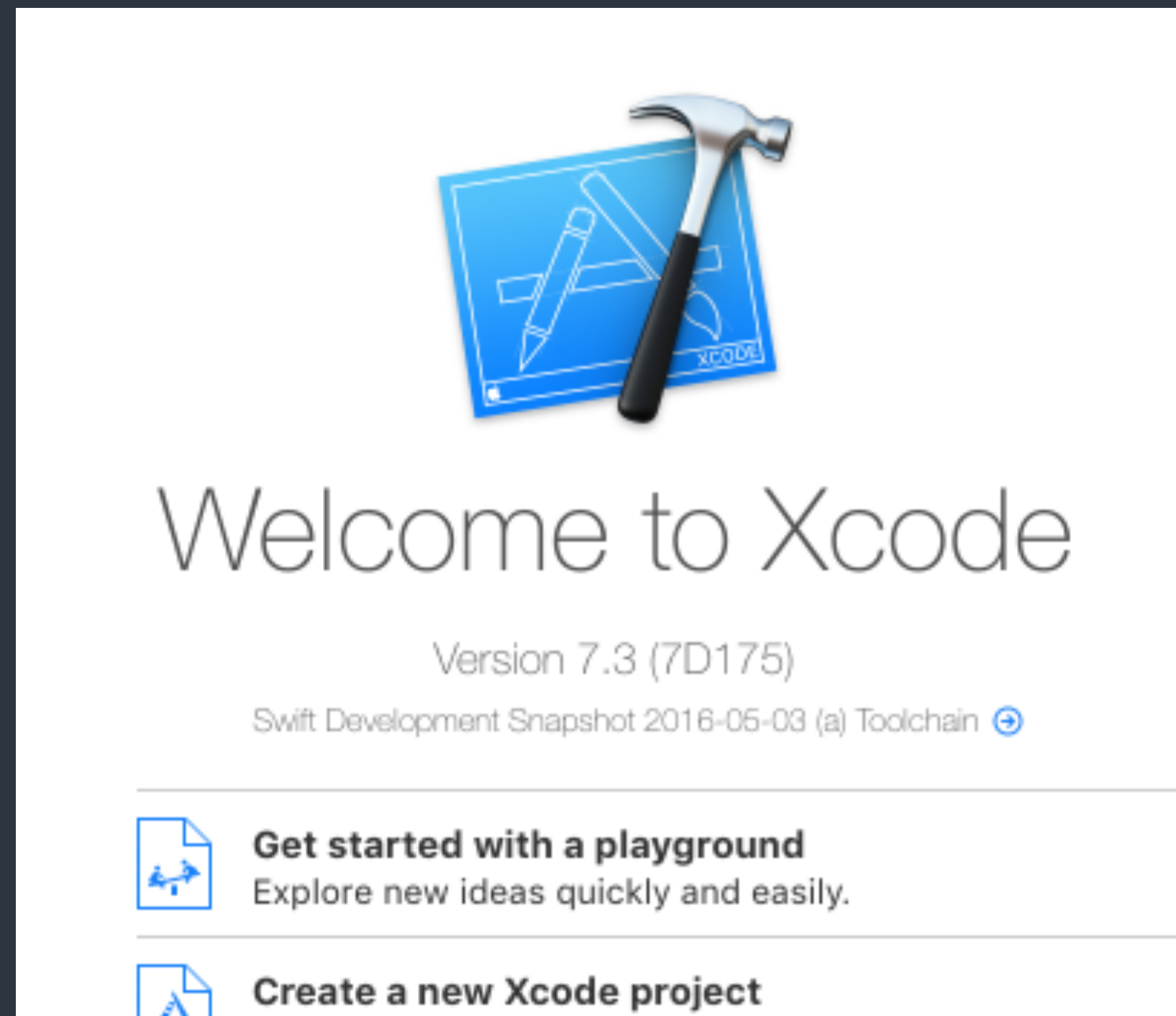
Follow swift.org and the Swift Evolution.

- **swiftenv** allows you to easily install, and switch between multiple versions of Swift.

<https://github.com/kylef/swiftenv>

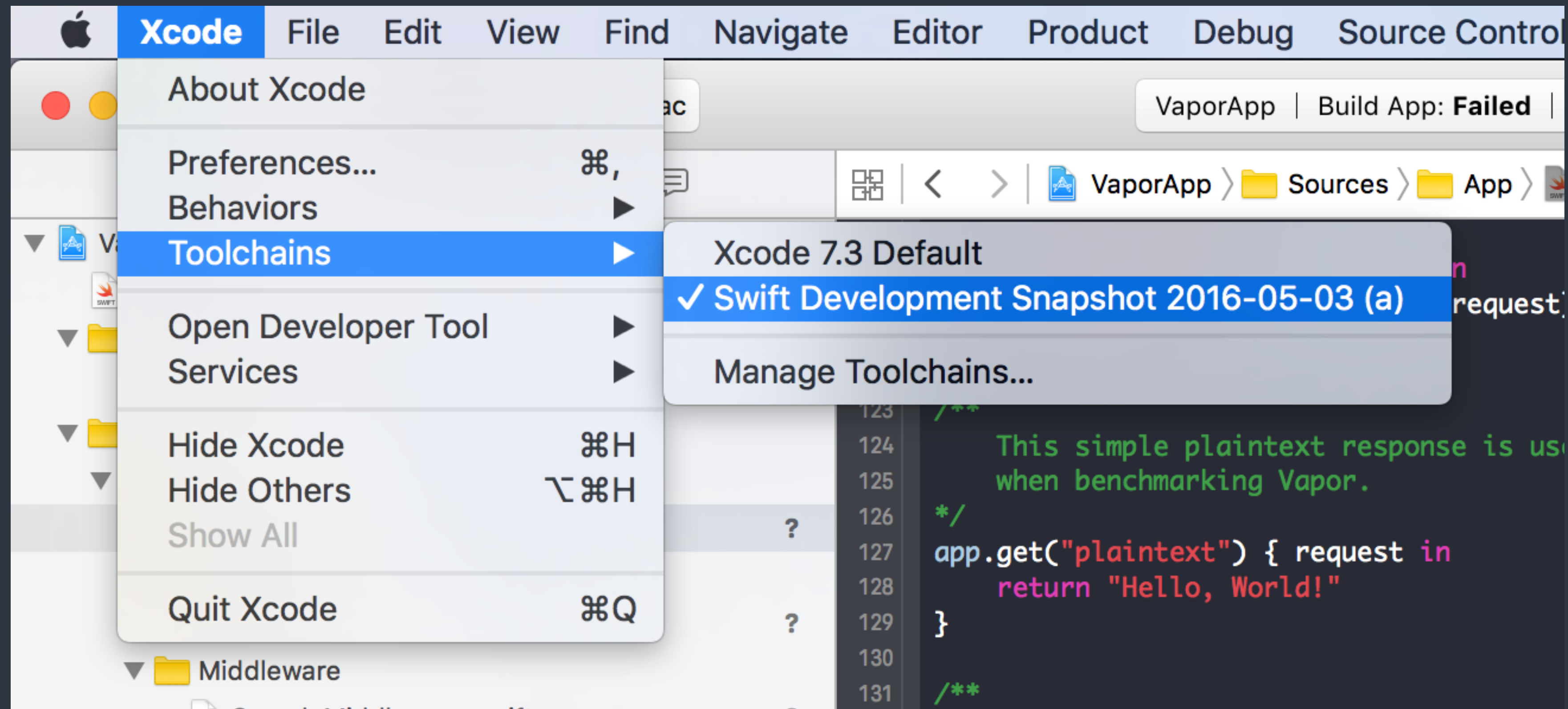
```
# Install the swiftenv from brew
$ brew install kylef/formulae/swiftenv
# Setup your shell setting. Bash here for example.
$ echo 'if which swiftenv > /dev/null; then eval "$(swiftenv init -)"; fi' >>
~/.bash_profile
# Install a different version of swift.
# Check the version with the package you want to use.
# Or paste the URL of .pkg file from the swift.org
# "DEVELOPMENT-SNAPSHOT-2016-05-03-a" here for example
$ swiftenv install DEVELOPMENT-SNAPSHOT-2016-05-03-a
...
$ swiftenv versions
  DEVELOPMENT-SNAPSHOT-2016-05-03-a
* 2.2 (set by /Users/sodas/.swiftenv/version)
```

Use Swift 3.0 with Xcode



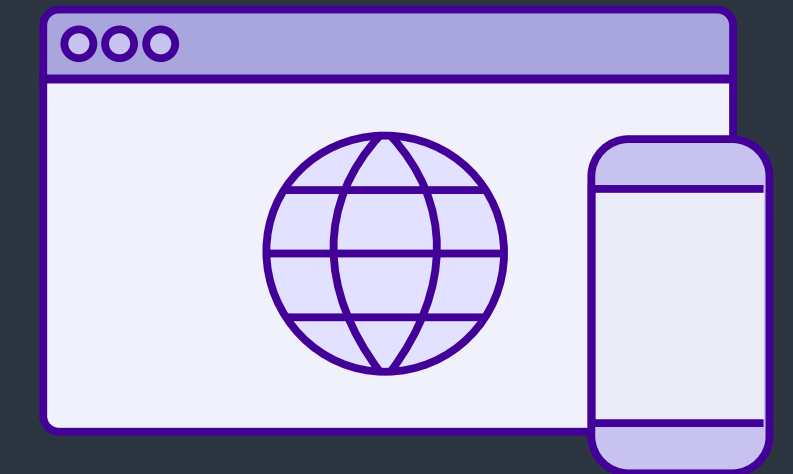
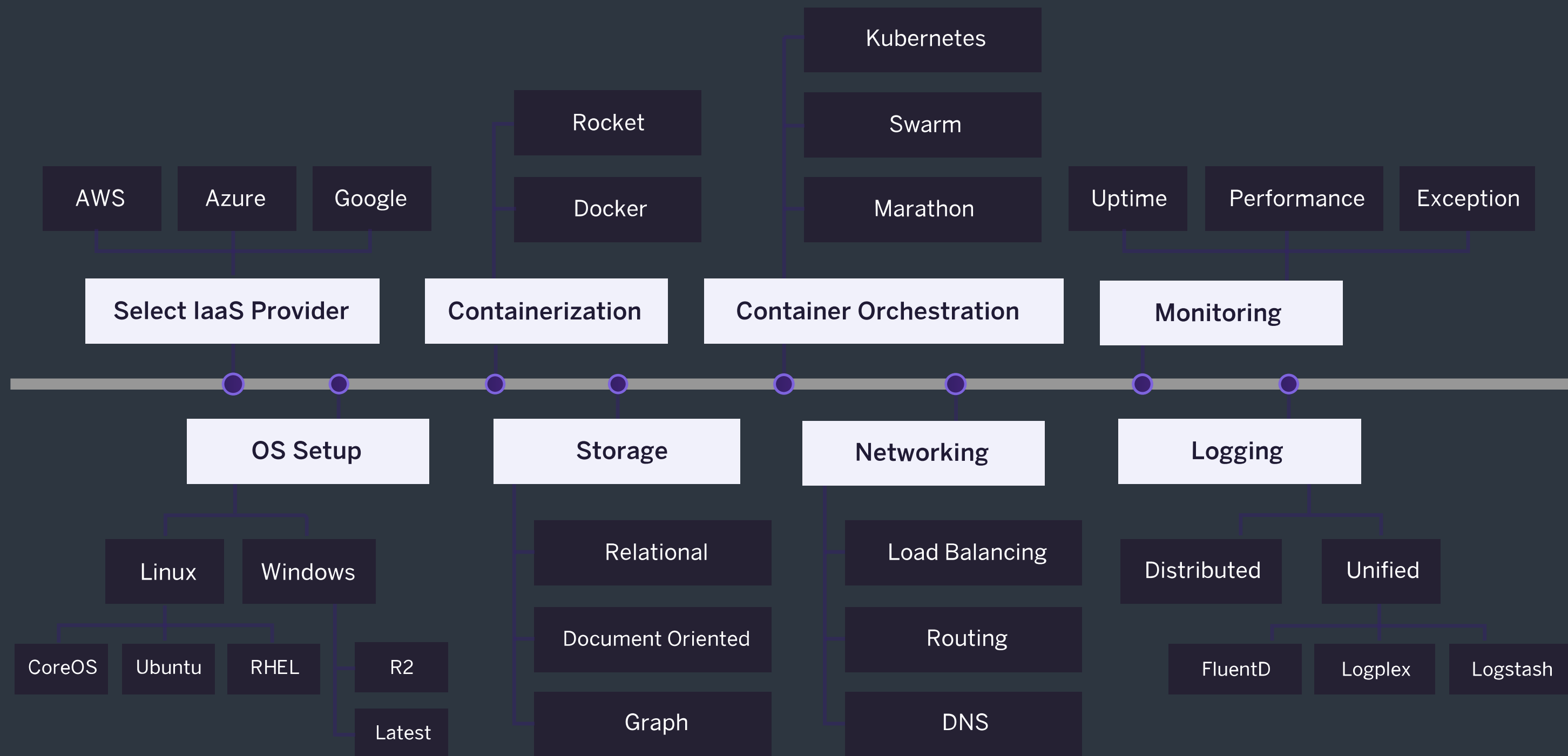
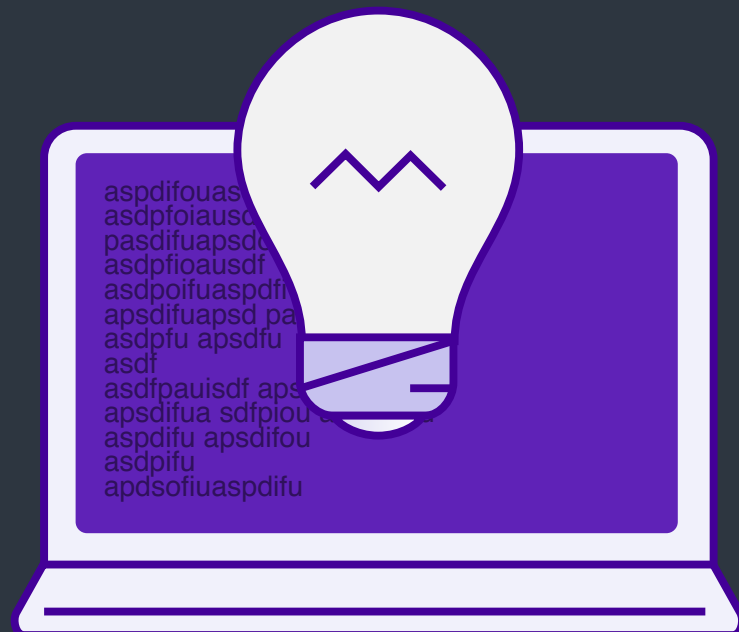
Change back to default for AppStore build.

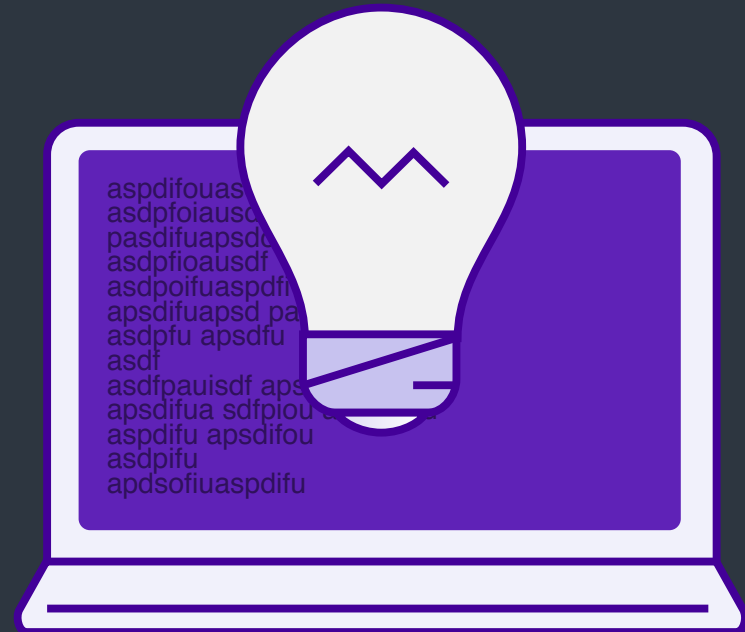
Use Swift 3.0 with Xcode





a PaaS provider from *Salesforce*





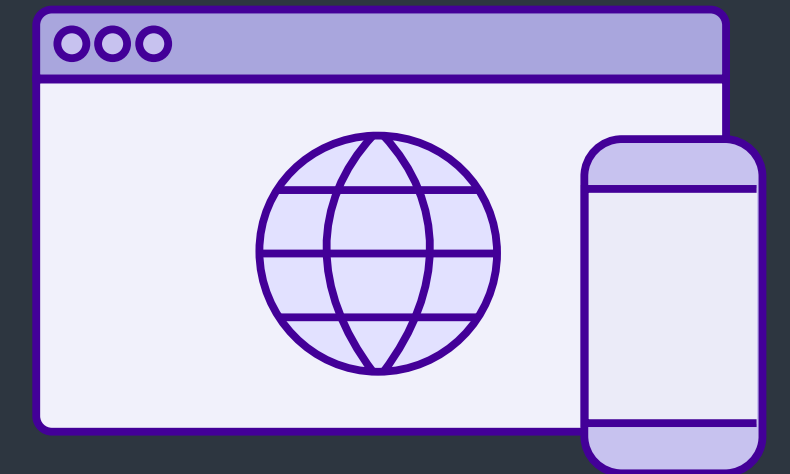
DEPLOY



MANAGE



SCALE





Supported languages of Heroku

Heroku Platform

- **Dyno**

A lightweight Linux container that **runs a single command** in its environment or in your app's slug.

- **Buildpacks**

When the Heroku platform receives the application source, it initiates a build of the source application and assembles them into a slug.

- **Slug**

A slug is a bundle of your source, fetched dependencies, the language runtime, and compiled/generated output of the build system - ready for execution.

- **Git deployment**

The Heroku platform uses git as the primary means for deploying applications.

Heroku Platform

- **Heroku Add-ons**

Heroku add-ons are components, services, or pieces of infrastructure that are fully maintained for you, either by a third-party provider or by Heroku.

- **Heroku Postgres**

the SQL database service run by Heroku that is provisioned and managed as an add-on.

- **Heroku Redis**

An in-memory key-value data store, run by Heroku, that is provisioned and managed as an add-on.

